



MORNING MANTRA



Daily Derivatives & Market Report

APR 02, 2025



Local equity markets ended their two-day losing streak on Wednesday. Both indices, Nifty and Sensex, closed with gains of over half a percent each ahead of the anticipated U.S. tariff announcement later in the day. Indices made a positive start and maintained their upward momentum till end of the day, as traders took some support with the government data showing that Gross Goods and Services Tax (GST) collection in March grew 9.9 per cent to over Rs 1.96 lakh crore.

Some of the important factors in today's trade:

India's Manufacturing PMI surges to 58.1 in March: Some support came in as the seasonally adjusted HSBC India Manufacturing Purchasing Managers' Index (PMI) surged to 58.1 in March as against 56.3 in February.

India ranks 4th in forex reserves: Traders took some support with the Finance Minister Nirmala Sitharaman's statement that India is the fourth largest holder of foreign exchange reserves at \$658.8 billion, enough for 11 months of imports.

FII's extends selling streak: Traders overlooked the exchange data showed the foreign institutional investors (FIIs) continued their selling for the second consecutive session on April 1 as they sold equities worth Rs 5,901 crore.

Global front: European markets were trading in the red ahead of reciprocal tariffs announcement from the U.S. later in the day. The new tariff rates will take effect immediately after they are announced by U.S. President Donald Trump at 2000 GMT. Asian markets ended mixed as South Korea's consumer price inflation rose slightly in March. The consumer price index grew 2.1 percent on a yearly basis in March, faster than the 2.0 percent increase in February.

MARKET SELFIE



MARKET SUMMARY

Domestic Indices	Close	Points	% Change
SENSEX	76617.44	592.93	0.78
NIFTY	23332.35	166.65	0.72
MIDCAP	41667.65	567.77	1.38
SMLCAP	47136.15	464.22	0.99
BSEFMC	19519.41	217.15	1.12
HEALTHCARE	41122.77	287.71	0.70
AUTO	47960.19	392.18	0.82
POWER	6539.95	36.05	0.55
REALTY	6632.01	231.74	3.62
BSE IT	35642.16	326.82	0.93
BANKEX	59149.79	499.98	0.85
OIL GAS	25362.04	71.68	0.28
METAL	30678.32	129.29	0.42
INDIA VIX	13.72	-0.06	-0.44

ADVANCE - DECLINE

Index	Advance	Decline	Unchanged
NSE	2325	650	34
BSE	2857	1095	133

MARKET TURNOVER (₹ in Crs)

Segment	Current	Previous	Net %
BSE CASH	4712	4612	2
NSE CASH	79803	85430	(7)
NSE F&O	143517	173527	(17)

KEY INDICES RATIOS

INDEX	P/E	P/B	Dividend Yield
NIFTY	21.20	3.45	1.33
SENSEX	21.35	3.94	1.19

KEY NUMBERS TRACKER



FII – DII ACTIVITY IN CASH SEGMENT (₹ in Crs)

FII-DII*	Buy	Sell	Net
DII	11762	8953	2809
FII	12099	13638	(1539)

Note: FPI & DII Figures are provisional

FII ACTIVITY IN DERIVATIVES SEGMENT (₹ in Crs)

FII	Buy	Sell	Net
Index Futures	2583.82	1920.99	663
Index Options	1453724.11	1483446.50	(29722)
Stock Futures	19029.12	15228.86	3800
Stock Options	51497.54	52708.64	(1211)

PUT-CALL RATIO

Index	Current	Previous
NIFTY	0.96	0.76
BANK NIFTY	0.94	0.88

DOLLAR INDEX

Dollar Index	Current	Previous	% Change
DXY	104.08	104.20	-0.11

10-YEARS G-SEC YIELD

Country	Current	Previous	% Change
INDIA	6.483	6.579	-1.46
USA	4.145	4.156	-0.26

KEY COMMODITIES TRACKER (in \$)

Commodity	Current	Change Points	% Change
Gold	3129.51	14.39	0.46
Silver	34.00	0.34	1.04
Crude-Oil	71.18	-0.02	-0.03
Brent-Crude	74.41	-0.08	-0.11

CURRENCY FUTURES & INDEX TRENDS TRACKER



CURRENCY FUTURES

Expiry	Close	Change Points	% Change
28 APR-25 USD-INR	85.72	0.03	0.03
28 APR-25 EUR-INR	92.68	0.26	0.28
28 APR-25 GBP-INR	110.86	-0.09	-0.08
28 APR-25 JPY- INR	57.69	0.26	0.45

INDICES – SUPPORT-RESISTANCE-PIVOT LEVELS

Index	Close	S2	S1	Pivot	R1	R2
NIFTY	23332	23089	23211	23280	23402	23472
SENSEX	76617	75839	76228	76454	76844	77070
NIFTY FUTURES	23439	23240	23339	23400	23499	23559
BANK NIFTY	51348	50724	51036	51220	51532	51716
CNX IT	36284	35810	36047	36208	36445	36606
CNX MIDCAP	52053	50488	51270	51676	52459	52865
CNX SMALLCAP	16162	15676	15919	16048	16291	16419
INDIA VIX	13.72	13.16	13.44	13.79	14.07	14.42

INDEX TREND ANALYSIS

Index	Daily	Weekly	Monthly
NIFTY	NEUTRAL	NEUTRAL	Buy
SENSEX	NEUTRAL	NEUTRAL	Buy
NIFTY FUTURES	NEUTRAL	NEUTRAL	Buy
BANK NIFTY	Buy	NEUTRAL	Buy
CNX IT	SELL	SELL	NEUTRAL
CNX MIDCAP	Buy	NEUTRAL	NEUTRAL
CNX SMALLCAP	Buy	NEUTRAL	NEUTRAL
INDIA VIX	NEUTRAL	SELL	SELL

SECURITIES BAN IN F&O TRADES FOR 03-04-2025

NIL

TECHNICAL VIEWS



NIFTY

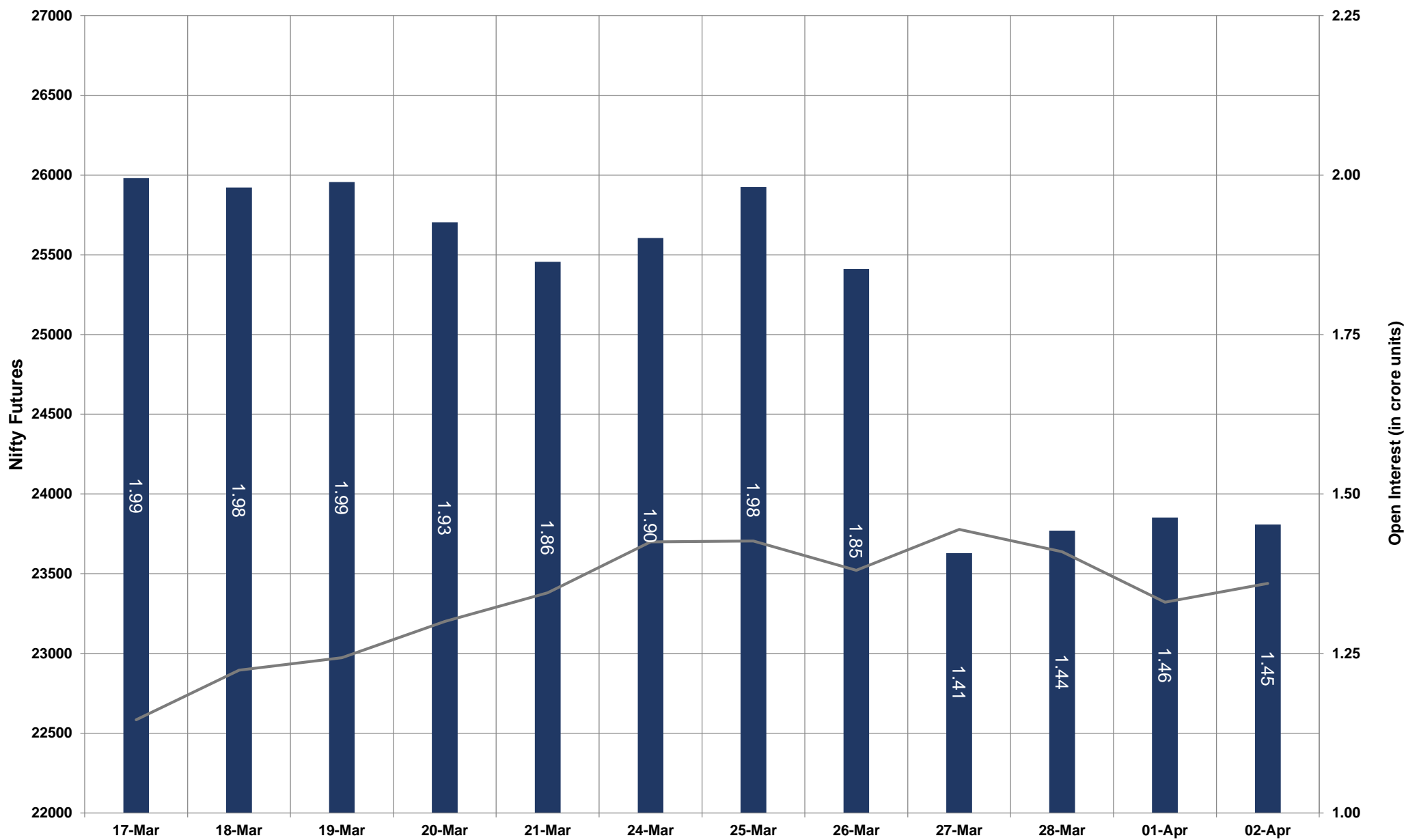


- Nifty Cash = **23332.35 (0.72%)**
- Resistance levels = **23550** and **23700**
- Support levels = **23150** and **23050**

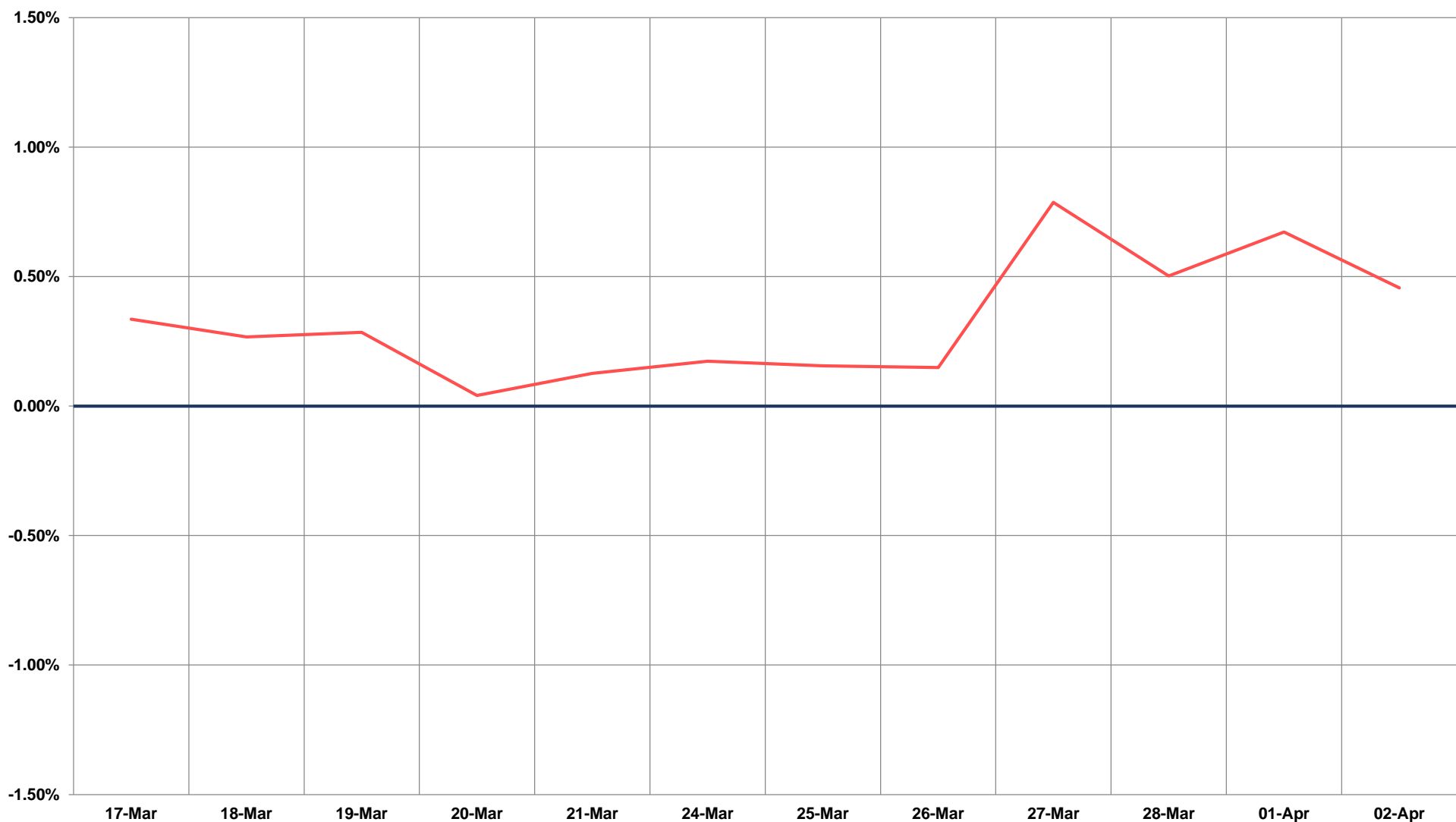
TECHNICAL VIEWS



NIFTY FUTURES



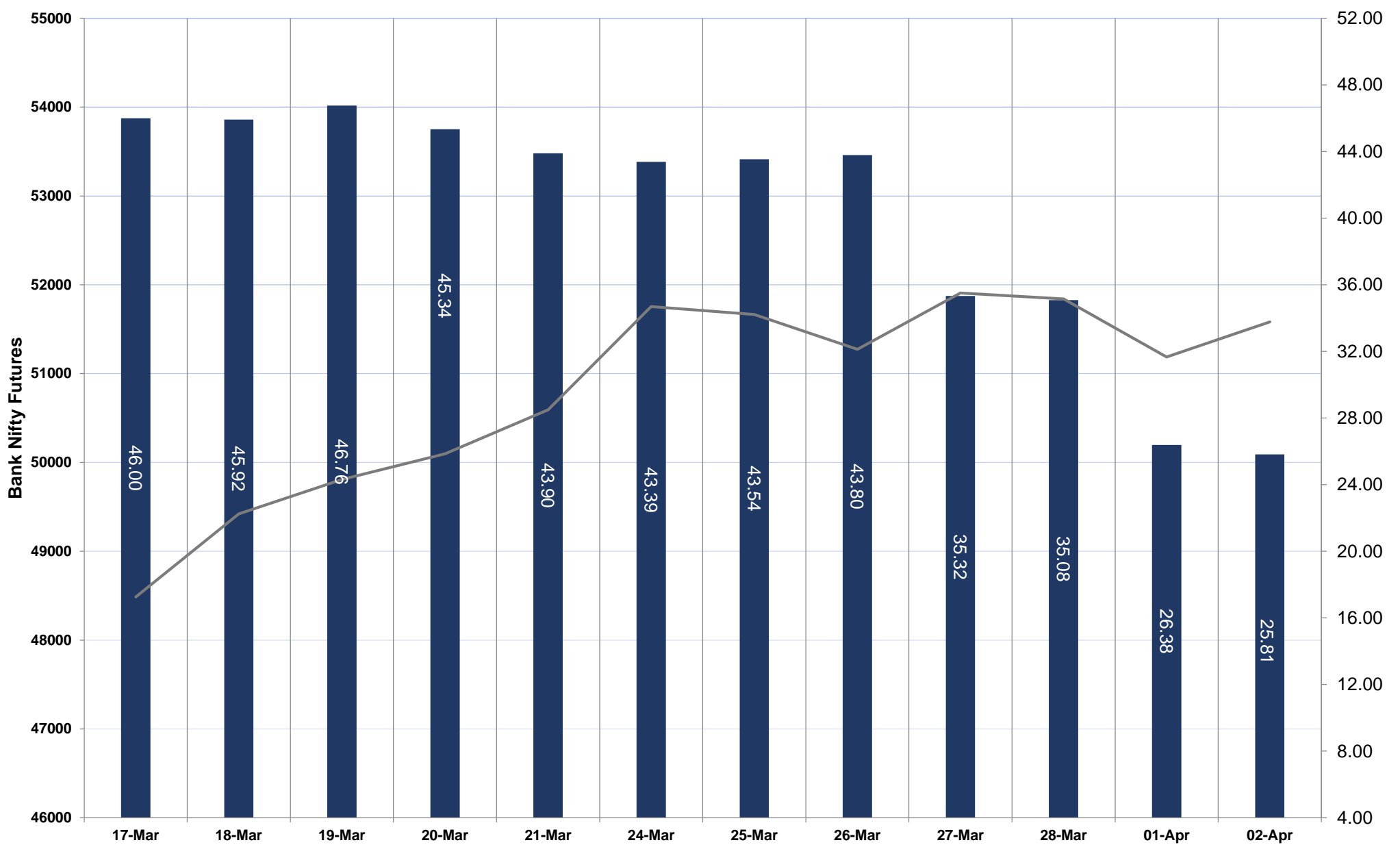
SPREAD: FUTURE & SPOT



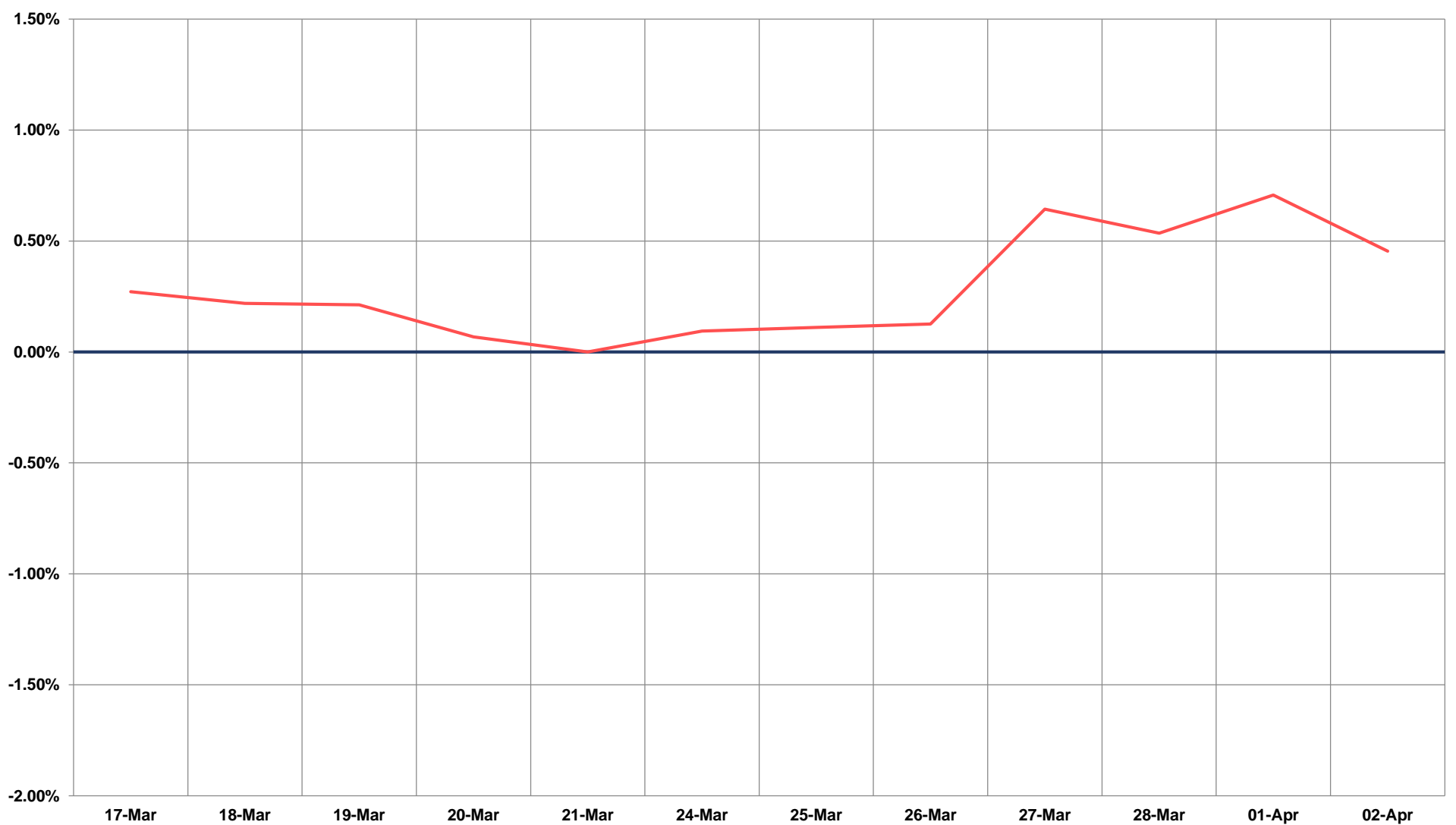
TECHNICAL VIEWS



BANK NIFTY FUTURES



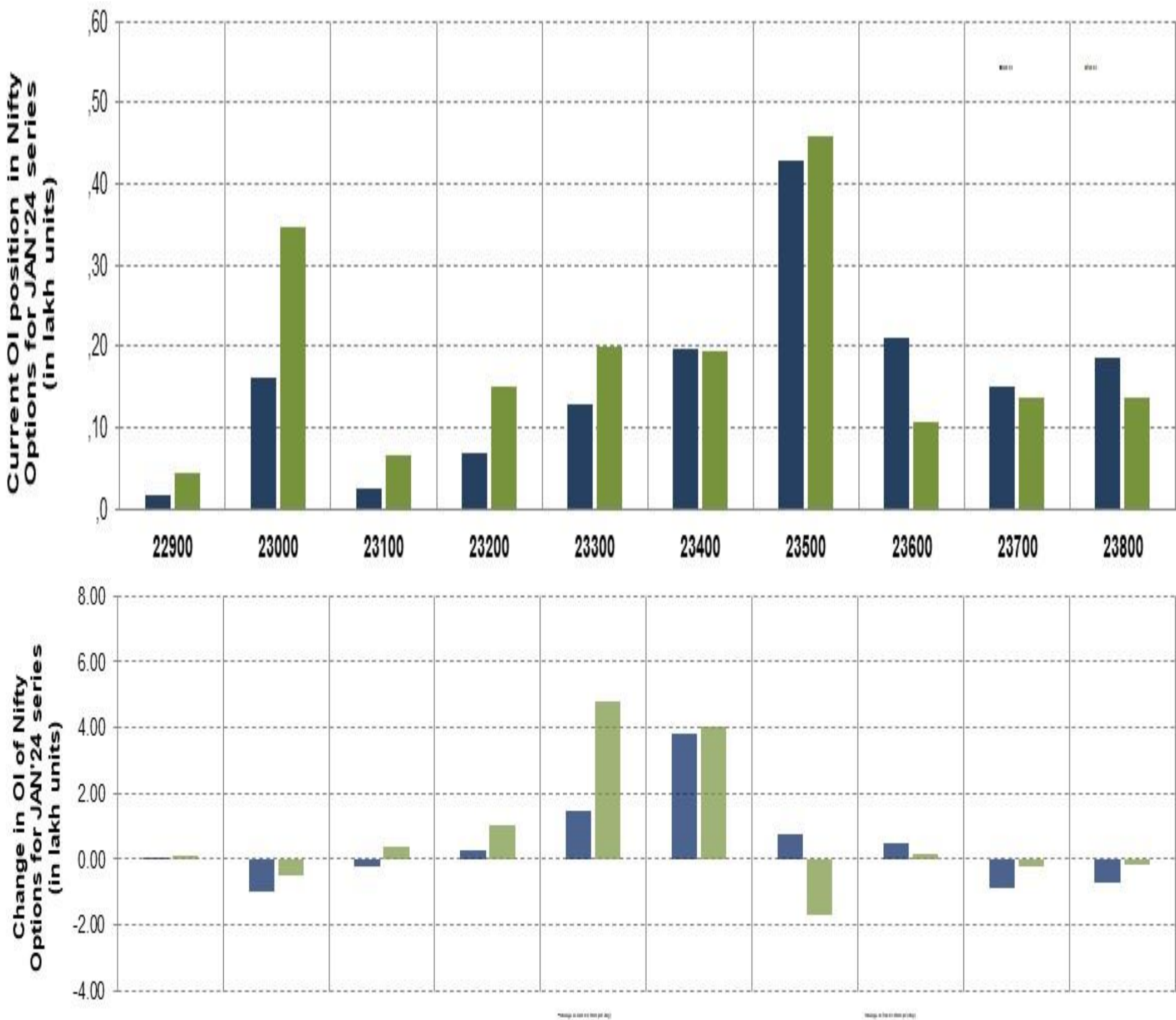
SPREAD: FUTURE & SPOT



TECHNICAL VIEWS



NIFTY OPTIONS



- **Most Active Nifty Call** with an addition of 0.37 million in Open Interests is **Strike Price of 23400**
- **Most Active Nifty Put** with an addition of 0.48 millions in Open Interests is **Strike Price of 23300**
- **Maximum Open Interest an outstanding** was 4.28 millions for Calls at **Strike Price of 23500**
- **Maximum Open Interest an outstanding** was 4.57 millions for puts at **Strike Price of 23500**

Disclaimer



The Information provided by SMS or in newsletter or in any document has been prepared by Shah Investor's Home Ltd (SIHL). The Information provided by SMS or in newsletter does not constitute an offer or solicitation for the purchase or sale of any financial instrument or as an official confirmation of any transaction. The information contained herein is from publicly available data or other sources believed to be reliable, but we do not represent that it is accurate or complete and it should not be relied on as such. SIHL or any of its affiliates/ group companies shall not be in any way responsible for any loss or damage that may arise to any person from any error in the information contained in this report or SMS. This Information provided by SMS, reports or in newsletter is provided for assistance only and is not intended to be and must not alone be taken as the basis for an investment decision. The user assumes the entire risk of any use made of this information. Each recipient of this Information provided by SMS, report or in newsletter should make such investigation as it deems necessary to arrive at an independent evaluation of an investment in the securities of companies referred to in this information provided by SMS, report or in newsletter (including the merits and risks involved), and should consult his own advisors to determine the merits and risks of such investment. The investment discussed or views expressed may not be suitable for all investors. This information is strictly confidential and is being furnished to you solely for your information.

The information should not be reproduced or redistributed or passed on directly or indirectly in any form to any other person or published, copied, in whole or in part, for any purpose. The information provided by report or SMS is not directed or intended for distribution to, or use by, any person or entity who is a citizen or resident of or located in any locality, state, country or other jurisdiction, where such distribution, publication, availability or use would be contrary to law, regulation or which would subject SIHL and affiliates/ group companies to any registration or licensing requirements within such jurisdiction. The distribution of this Information provided by SMS or in newsletter in certain jurisdictions may be restricted by law, and persons in whose possession this Information provided by SMS or in newsletter comes, should inform themselves about and observe, any such restrictions. The information given or Information provided by SMS, report or in newsletter is as of the date of the issue date of report or the date on which SMS provided and there can be no assurance that future results or events will be consistent with this information. This information is subject to change without any prior notice. SIHL reserves the right to make modifications and alterations to this statement as may be required from time to time. However, SIHL is under no obligation to update or keep the information current.

Nevertheless, SIHL is committed to providing independent and transparent recommendation to its client and would be happy to provide any information in response to specific client queries. Neither SIHL nor any of its affiliates, group companies, directors, employees, agents or representatives shall be liable for any damages whether direct, indirect, special or consequential including lost revenue or lost profits that may arise from or in connection with the use of the information. Past performance is not necessarily a guide to future performance. The disclosures of interest statements incorporated in the Information provided by SMS, report or in newsletter are provided solely to enhance the transparency and should not be treated as endorsement of the views expressed in the report. The analyst for this report certifies that all of the views expressed in this report accurately reflect his or her personal views about the subject company or companies and its or their securities, and no part of his or her compensation was, is or will be, directly or indirectly related to specific recommendations or views expressed in this report.